



OFFICE SPACE FOR LEASE AT DOWNTOWN EAST

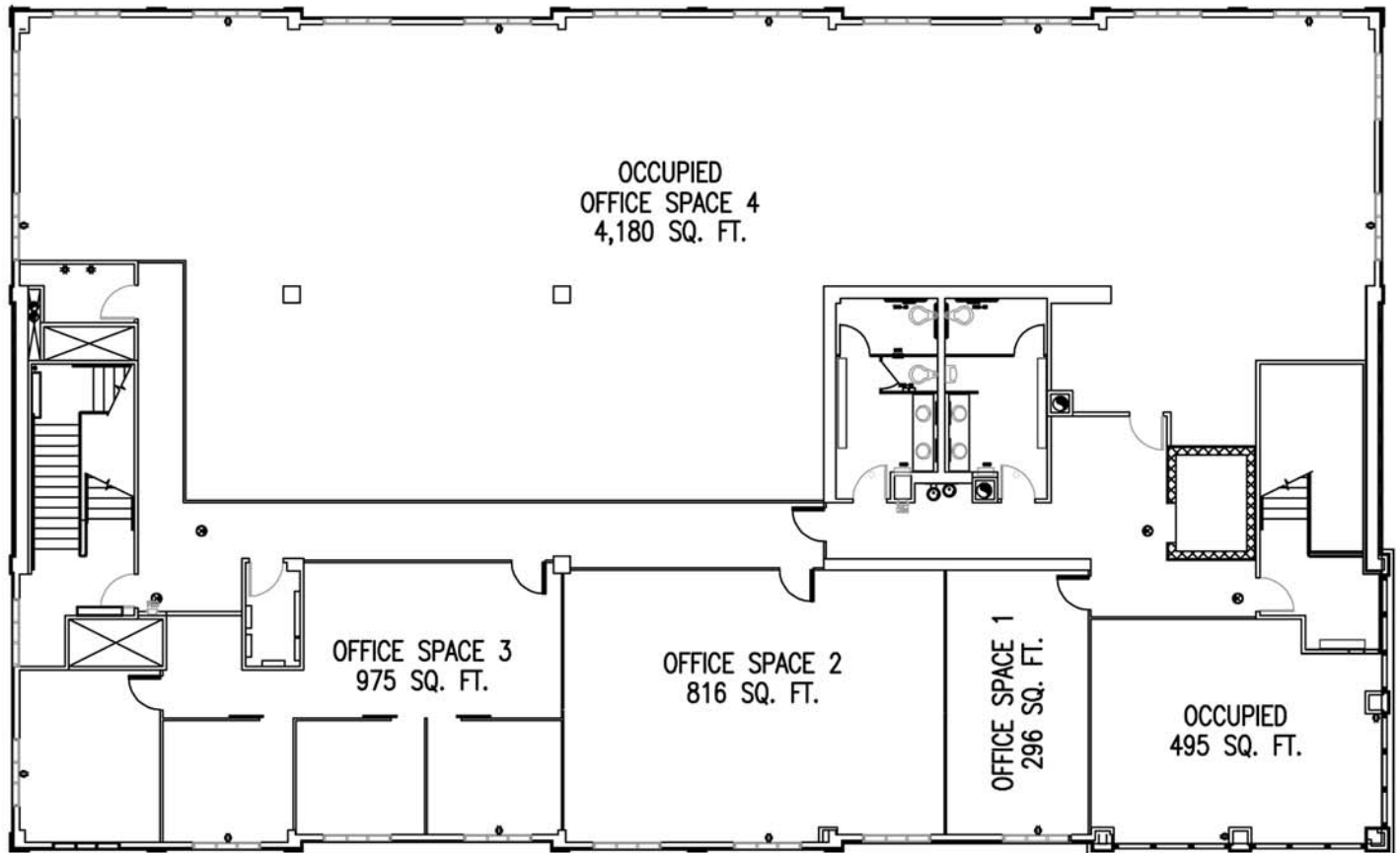


HANCOCK ASKEW & CO LLP
ACCOUNTANTS & ADVISORS

100 RIVERVIEW DRIVE • SAVANNAH, GEORGIA 31404
(912) 234-8243

DOWNTOWN EAST - OFFICE CENTER

PRESIDENT STREET / ISLANDS EXPRESSWAY, SAVANNAH, GA



DESIGN YOUR OWN SPACE!

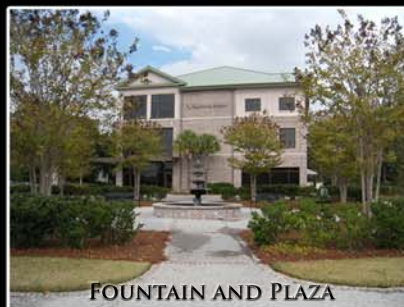
FOR MORE
INFORMATION,
CONTACT:

RHETT MOUCHET

RMOUCHET@
KULPMOUCHET.COM

P: (912) 525-2310
C: (912) 713-4341
F: (912) 238-9942

104 W STATE ST., SUITE 200
SAVANNAH, GA 31401



DOWNTOWN EAST - OFFICE CENTER

PRESIDENT STREET / ISLANDS EXPRESSWAY, SAVANNAH, GA

- ▶ BEAUTIFUL VIEWS FROM TOP FLOOR
- ▶ 1,500 SF TO 7,000 SF
- ▶ ATRIUM ENTRANCE
- ▶ INTERIOR WORKSPACE IS DESIGNED USING SMED LIFESPACE™ WALLS AND CONSTRUCTIVE SOLUTIONS™
- ▶ STRONG CORPORATE NEIGHBORS
- ▶ QUICK ACCESS TO DOWNTOWN
- ▶ EASY ACCESS TO THE ISLANDS
- ▶ GREAT VISIBILITY
- ▶ PARK SETTING
- ▶ LAKE WITH WALKING PATH
- ▶ PEDESTRIAN PLAZA WITH FOUNTAIN

PREMISES: 800 TO 6,300 SF
LEASE TERM: NEGOTIABLE
AVAILABILITY: IMMEDIATE
RATE: \$25.00 PSF (INCL. TI'S)
PARKING: ABUNDANT

BROKERS PROTECTED

FOR MORE
INFORMATION,
CONTACT:

RHETT MOUCHET

RMOUCHET@
KULPMOUCHET.COM

P: (912) 525-2310
C: (912) 713-4341
F: (912) 238-9942

104 W STATE ST., SUITE 200
SAVANNAH, GA 31401

EXISTING TENANT SPACE

